

CERTIFICATE OF LOCATION OF GOVERNMENT CORNER

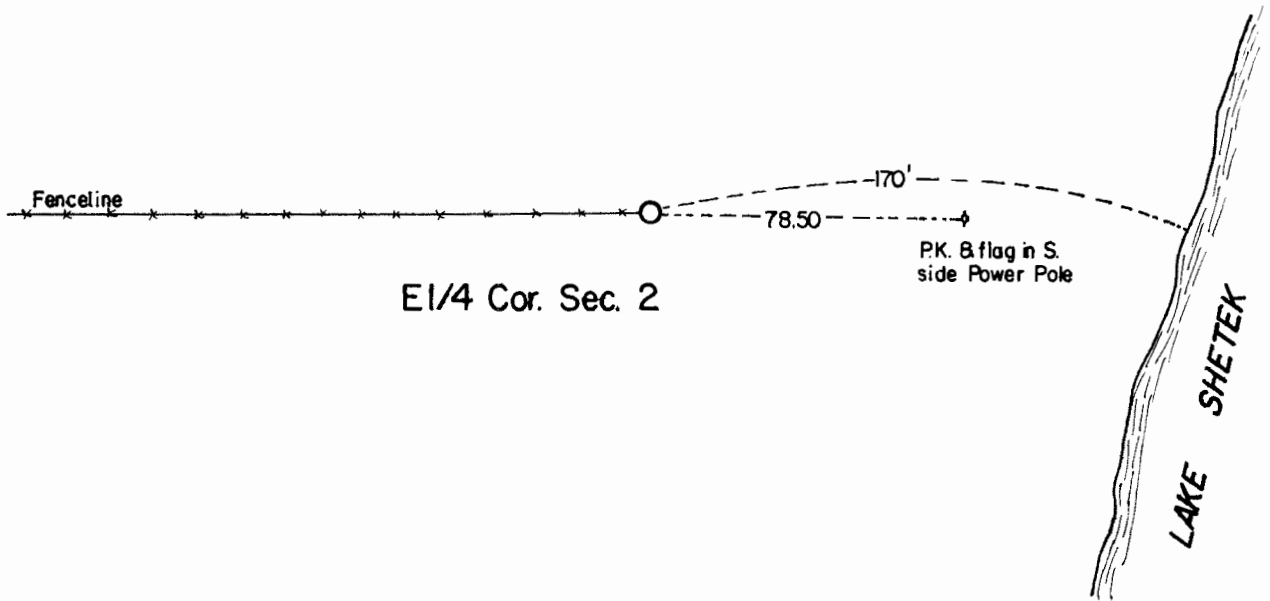
East Quarter Corner of Section 2, Township 107, Range 41 5th P.M.

STATE OF MINNESOTA, County of Murray.

Statement:

Sept. 29, 1989 - Found a 15 inch x 12 inch x 6 inch stone with a "T" iron alongside. Placed a Minnesota Department of Transportation Cast Iron Monument.

SKETCH OF REFERENCE TIES



Statement of evidence relative to this corner location is on the back of page.

I hereby certify that this document and the data contained herein was prepared by me or under my direct supervision and that I am a duly Registered Land Surveyor under the laws of the State of Minnesota.

Duane A. Bonnema

Date

Minnesota Registration No. 14895

OFFICE OF THE COUNTY RECORDER
COUNTY OF MURRAY
NOV 15 1989

I hereby certify that this document was filed in the County Recorder's office at ___ M. on the ___ day of _____ A.D., 19__

County Recorder

By _____, Deputy

DOCUMENT NO. _____

East Quarter Cor. Sec. 2 T107N-R41W

Statement:

- August 1861 Original Government Land Office Surveyor L. G. M. Fletcher records in his field notes, "Built mound with trench pits, charred stake, per instructions."*
- May 14, 1901 J. W. Woolstencroft, County Surveyor, records in the County Surveyor's Record Book, page 132, that he measured to the Corner, however, he does not state what type of monument was at the Corner.*
- May 1968 James Boerhave, LS Reg. No. 7095, as an employee of E. C. Bather did a plat entitled "EDGEWATER BEACH" near this corner. It appears that he placed a "T" iron alongside a stone in the fence line.*
- Sept. 29, 1989 Duane A. Bonnema, LS Reg. No. 14895, found a 15 inch x 12 inch x 6 inch stone with the pointed end up. The stone was found directly on an old fence line which runs in an East-West direction. Alongside the stone a "T" iron was found. This type of iron was used by E. C. Bather, and was probably placed in 1968 when they were working in this area doing the plat of "EDGEWATER BEACH". James Boerhave was contacted, however he doesn't remember placing this iron monument and he isn't sure where information could be obtained on this corner. Boerhave no longer works for Bather, and Bather is no longer in business in this area. A Minnesota Department of Transportation Cast Iron Monument was placed at the location of the stone monument.*